

RESOLUTION NO. 1480-2025

A RESOLUTION ADOPTING THE HONOR PARK MASTER PLAN

WHEREAS, the City Council desired to have a Master Plan developed for the proposed Honor Park Project in the City of Spanish Fort to allow for community input, to provide for recreational amenities to promote nature, conservation, outdoor recreation and outdoor experiences for the citizens of the City of Spanish Fort; and

WHEREAS, Thompson Engineering, prepared the Honor Park Project Master Plan for the City; and

NOW, THEREFORE, BE IT RESOLVED that the Honor Park Project Master Plan, which is attached hereto as Exhibit 1, is hereby adopted in its proposed form to provide guidance on development of Phase I and future phases of the Honor Park project.

ADOPTED and APPROVED this ____ day of _____, 2025.

Michael M. McMillan
Mayor

ATTEST:

Rebecca A. Gaines, CMC
City Clerk

HONOR PARK

CONCEPTUAL MASTER PLAN

Protect, Preserve, Enhance, Restore

January 2025

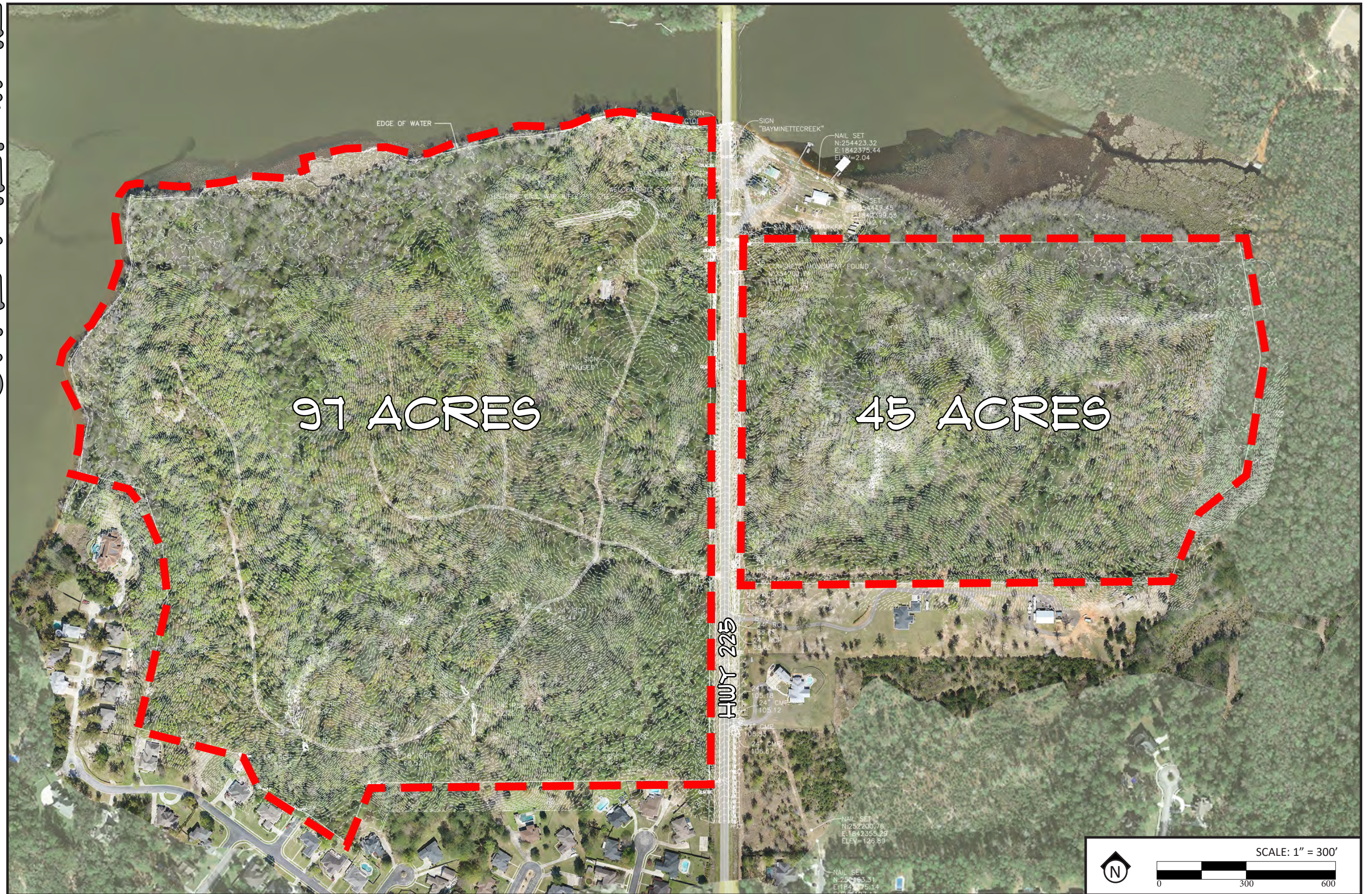


GOALS & OBJECTIVES

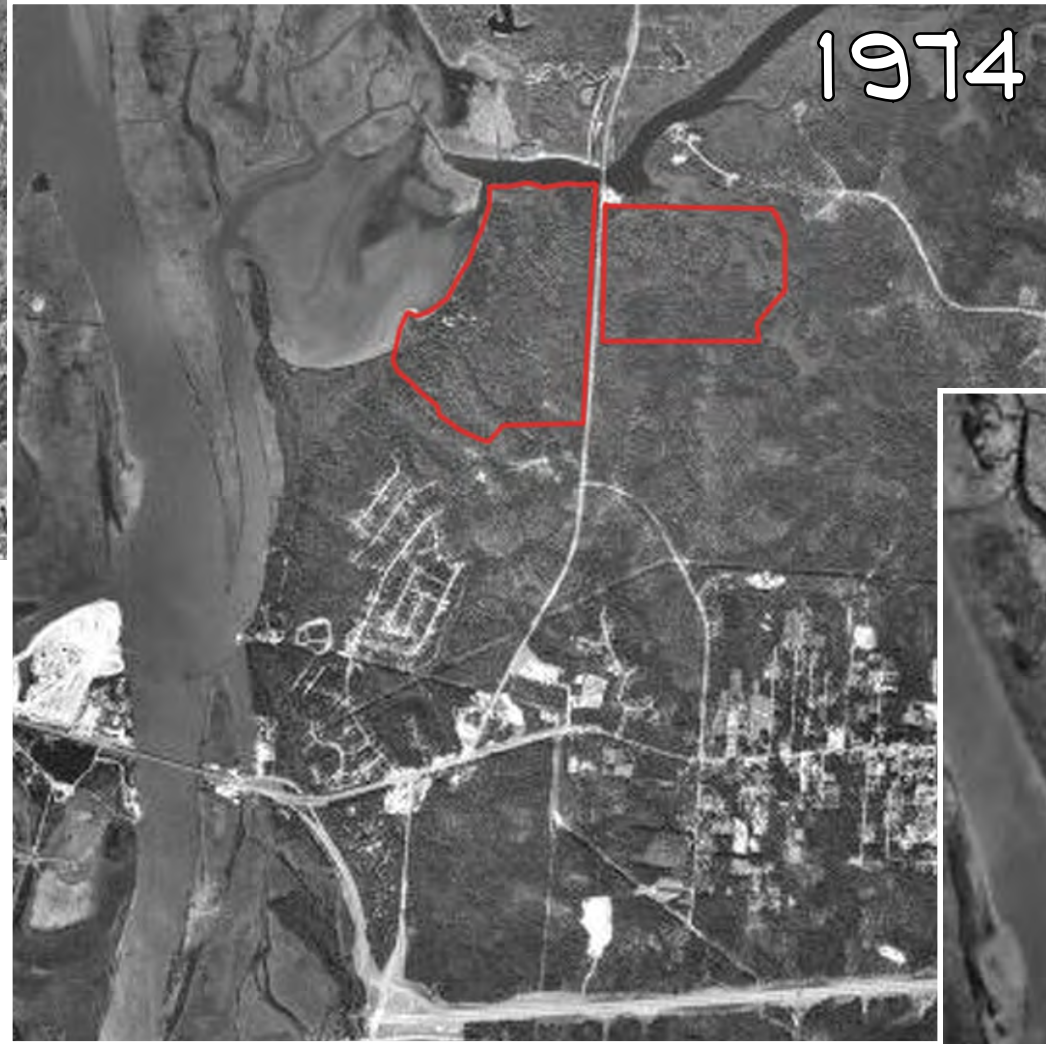
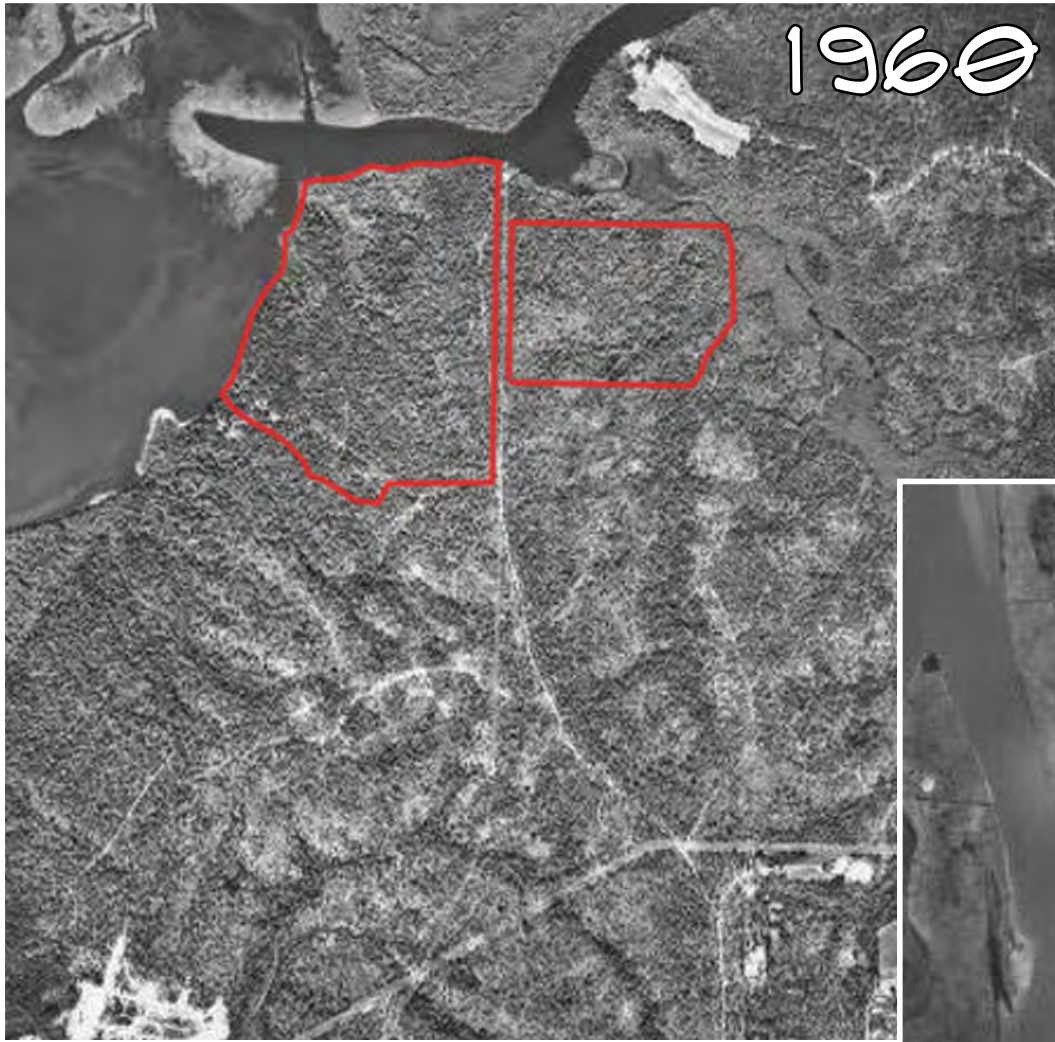
- PROTECT, PRESERVE, ENHANCE & RESTORE EXISTING NATIVE PLANT AND WILDLIFE HABITAT
- PROVIDE PASSIVE & ACTIVE RECREATION AND EDUCATIONAL OPPORTUNITIES FOR ALL CITIZENS AND VISITORS OF SPANISH FORT
- PROVIDE COMMON SPACES FOR HOSTING EVENTS SUCH AS MARKETS, CONCERTS, AND GATHERINGS
- IMPLEMENT BEST MANAGEMENT PRACTICES TO MITIGATE EROSION AND RESTORE NATIVE VEGETATION
- IMPLEMENT LOW IMPACT DEVELOPMENT AND SUSTAINABLE DESIGN TECHNIQUES
- EMPHASIZE QUALITY, ACCESSIBILITY, AND SAFETY IN ALL ASPECTS OF DESIGN



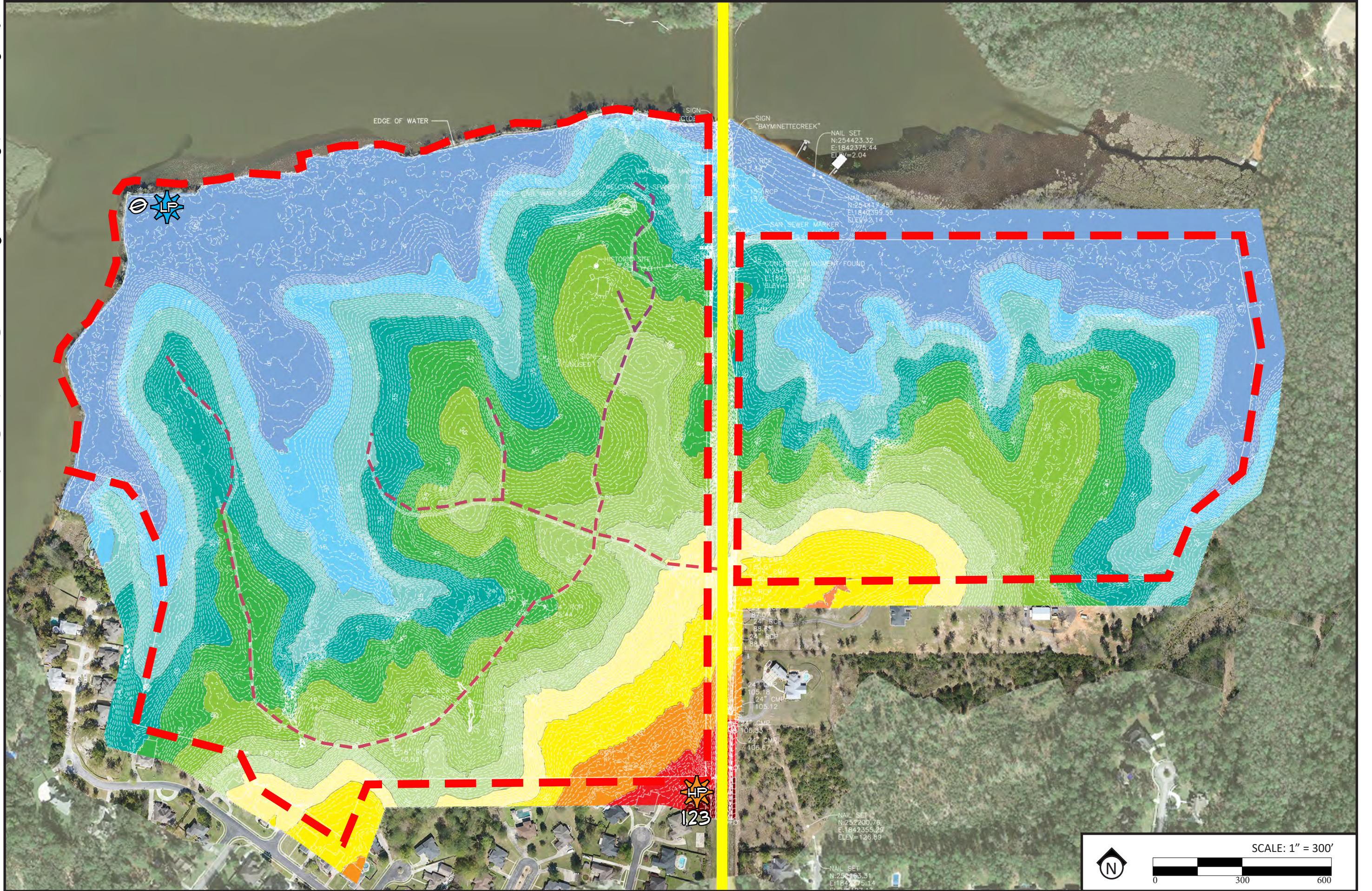
SITE AERIAL



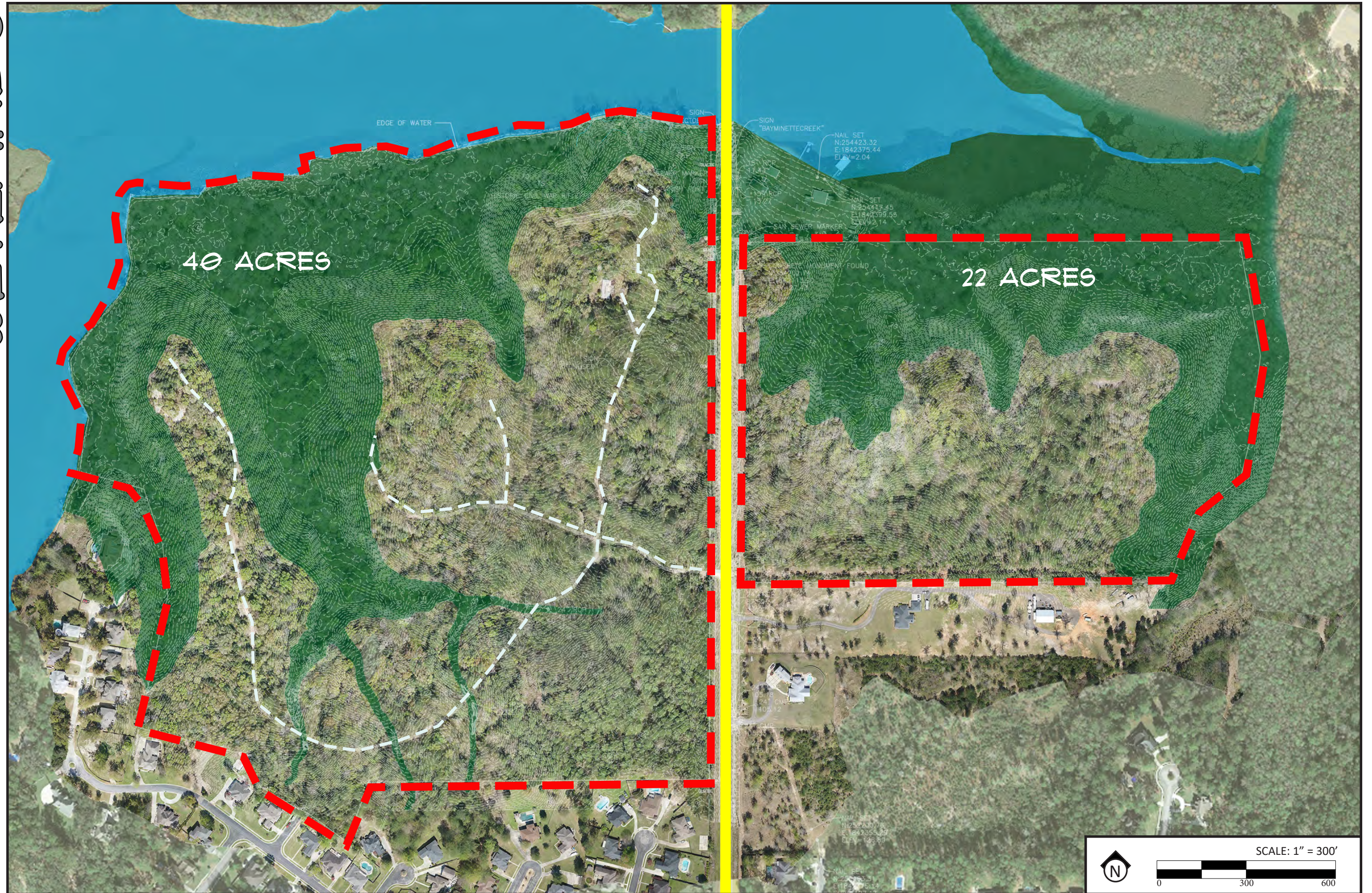
HISTORICAL CONTEXT



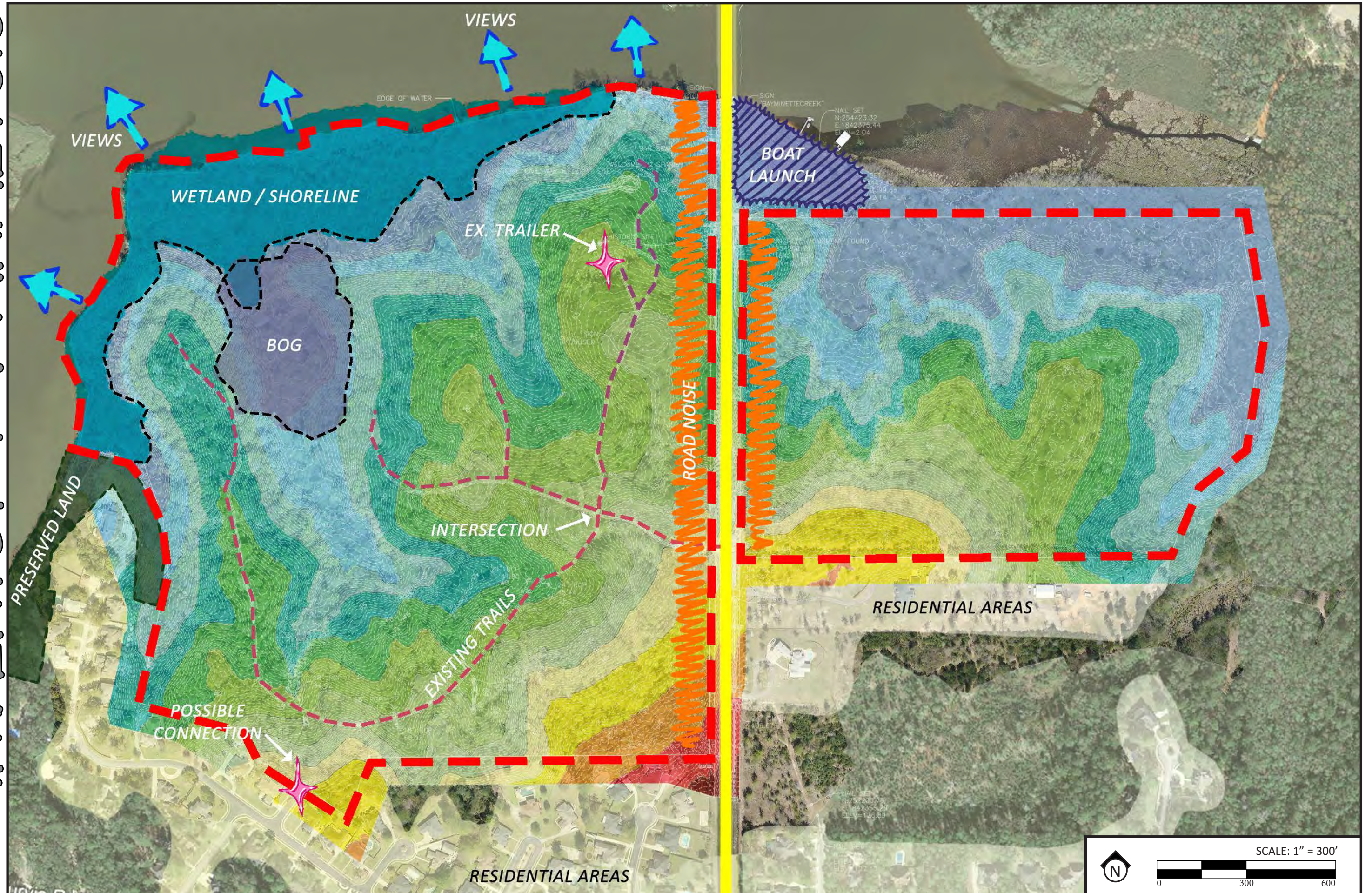
TOPOGRAPHY



WETLANDS



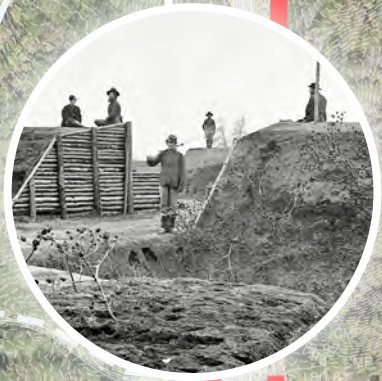
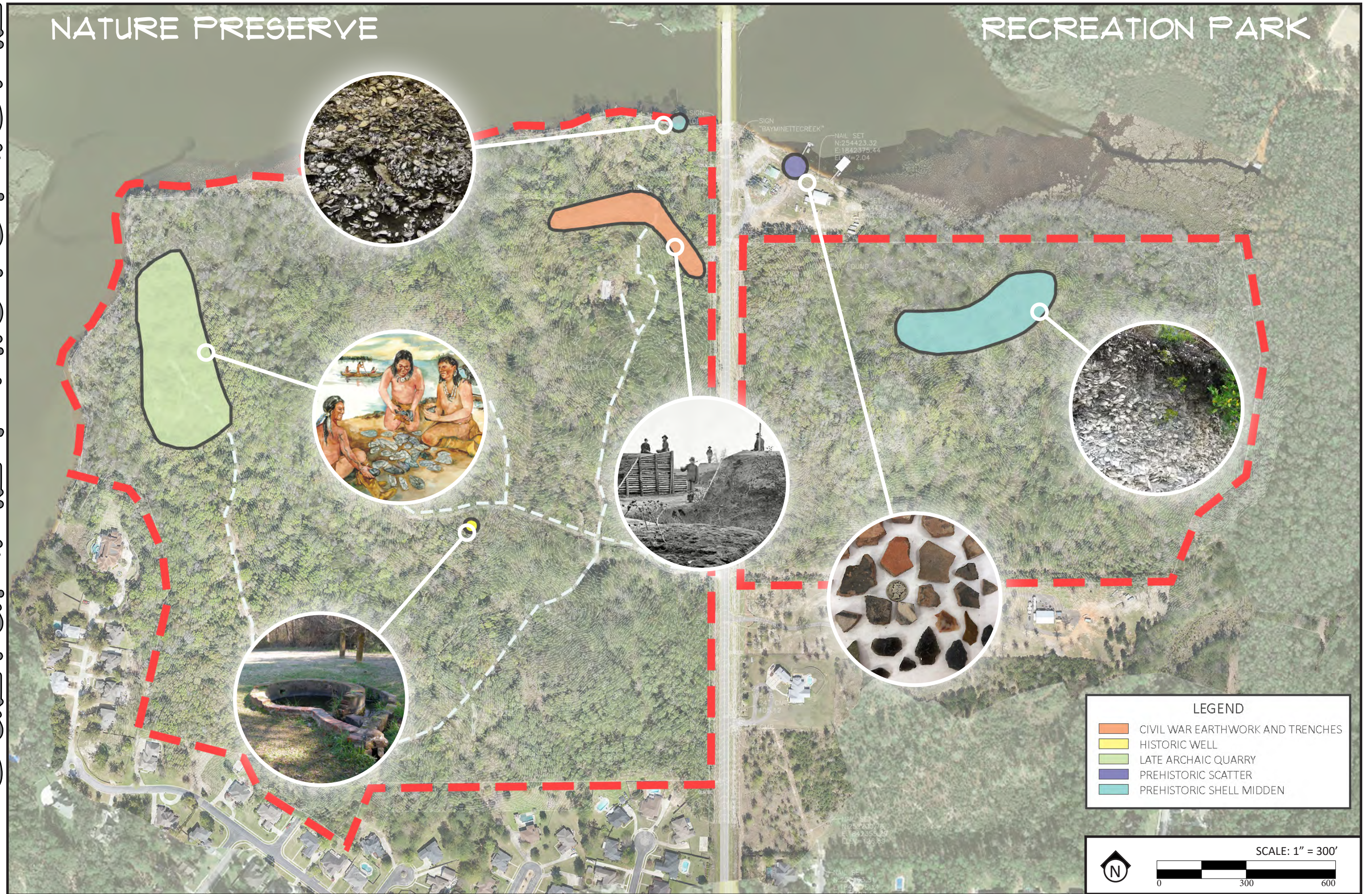
INVENTORY & ANALYSIS



CULTURAL / HISTORICAL

NATURE PRESERVE

RECREATION PARK



PUBLIC ENGAGEMENT

- STEERING COMMITTEE MEETINGS
 1. KICKOFF
 2. DRAFT CONCEPTUAL MASTER PLAN
 3. FINAL MASTER PLAN
- APPR. 2,000 PUBLIC SURVEY RESPONSES
- PRESENTATION TO CITY COUNCIL



PASSIVE RECREATION

SURVEY RESULTS

NATIVE PLANTS

WILDLIFE PROTECTION

EDUCATION

HISTORY/CULTURE

WATERFRONT

EVENT CENTER

NEIGHBORHOOD CONNECTIVITY

FISHING PIER

SITE AMENITIES

BOARDWALKS

NATIVE LANDSCAPE

STORMWATER MANAGEMENT

HIKING/WALKING

WATER STATIONS

ADA ACCESSIBILITY

KAYAK/CANOE

WETLANDS PROTECTION

BOTANICAL

BENCHES

EDUCATIONAL/WAYFINDING SIGNAGE

GREENWAY

HEALTH/WELLNESS

NATURE PRESERVE

PICNIC AREAS

CLASSROOMS

PIER

ECOLOGY

BAIT SHOP

TREE SWINGS

OUTDOOR GRILLS

NATURE CENTER

RESTROOMS

PAVILION/GAZEBO

SEATING AREAS

CABINS

VETERANS

PLANT I.D.

HORSE BACK RIDING

KAYAKING

SHADE

LAUNCH

CANOPY WALKS

TRAILS

EXERCISE

SECURITY

HONOR

LOW IMPACT DEVELOPMENT

ADEQUATE PARKING

ACCESS

RESPONSES: 1798

ACTIVE RECREATION

SURVEY RESULTS

ADA ACCESSIBILITY

DOG PARK

EXERCISE STATIONS

BICYCLING
FITNESS COURT
ADEQUATE
PERFORMING ARTS CENTER

DISC

FARMERS MARKET

PICNIC TABLES
SKATE PARK

RESTROOMS
GREAT LAWN

FESTIVALS
FOOD TRUCKS

SAFETY

AMPITHEATER

GOLF

PLAYGROUND

PARKING PAVILIONS

RESTROOMS

GREAT LAWN

OPEN SPACE

SPLASH PAD

WALKING/RUNNING PATHS

AMPITHEATER

GOLF

PLAYGROUND

PARKING PAVILIONS

RESTROOMS

GREAT LAWN

MUSIC VENUE

RELAX
SHADE
GREEN SPACE

PLAYGROUND

PARKING PAVILIONS

RESTROOMS

GREAT LAWN

OPEN SPACE

SPLASH PAD

WALKING/RUNNING PATHS

AMPITHEATER

RELAX
SHADE
GREEN SPACE

PLAYGROUND

PARKING PAVILIONS

RESTROOMS

GREAT LAWN

PET FRIENDLY

BENCHES
CONCERTS

PLAYGROUND

PARKING PAVILIONS

RESTROOMS

GREAT LAWN

OPEN SPACE

SPLASH PAD

WALKING/RUNNING PATHS

AMPITHEATER

RELAX
SHADE
GREEN SPACE

PLAYGROUND

PARKING PAVILIONS

RESTROOMS

GREAT LAWN

NATURE-BASED PLAY

PLAYGROUND

PARKING PAVILIONS

RESTROOMS

GREAT LAWN

OPEN SPACE

SPLASH PAD

WALKING/RUNNING PATHS

AMPITHEATER

RELAX
SHADE
GREEN SPACE

PLAYGROUND

PARKING PAVILIONS

RESTROOMS

GREAT LAWN

ROLLER SKATING

PLAYGROUND

PARKING PAVILIONS

RESTROOMS

GREAT LAWN

OPEN SPACE

SPLASH PAD

WALKING/RUNNING PATHS

AMPITHEATER

RELAX
SHADE
GREEN SPACE

PLAYGROUND

PARKING PAVILIONS

RESTROOMS

GREAT LAWN

ADEQUATE LIGHTING

PLAYGROUND

PARKING PAVILIONS

RESTROOMS

GREAT LAWN

OPEN SPACE

SPLASH PAD

WALKING/RUNNING PATHS

AMPITHEATER

RELAX
SHADE
GREEN SPACE

PLAYGROUND

PARKING PAVILIONS

RESTROOMS

GREAT LAWN

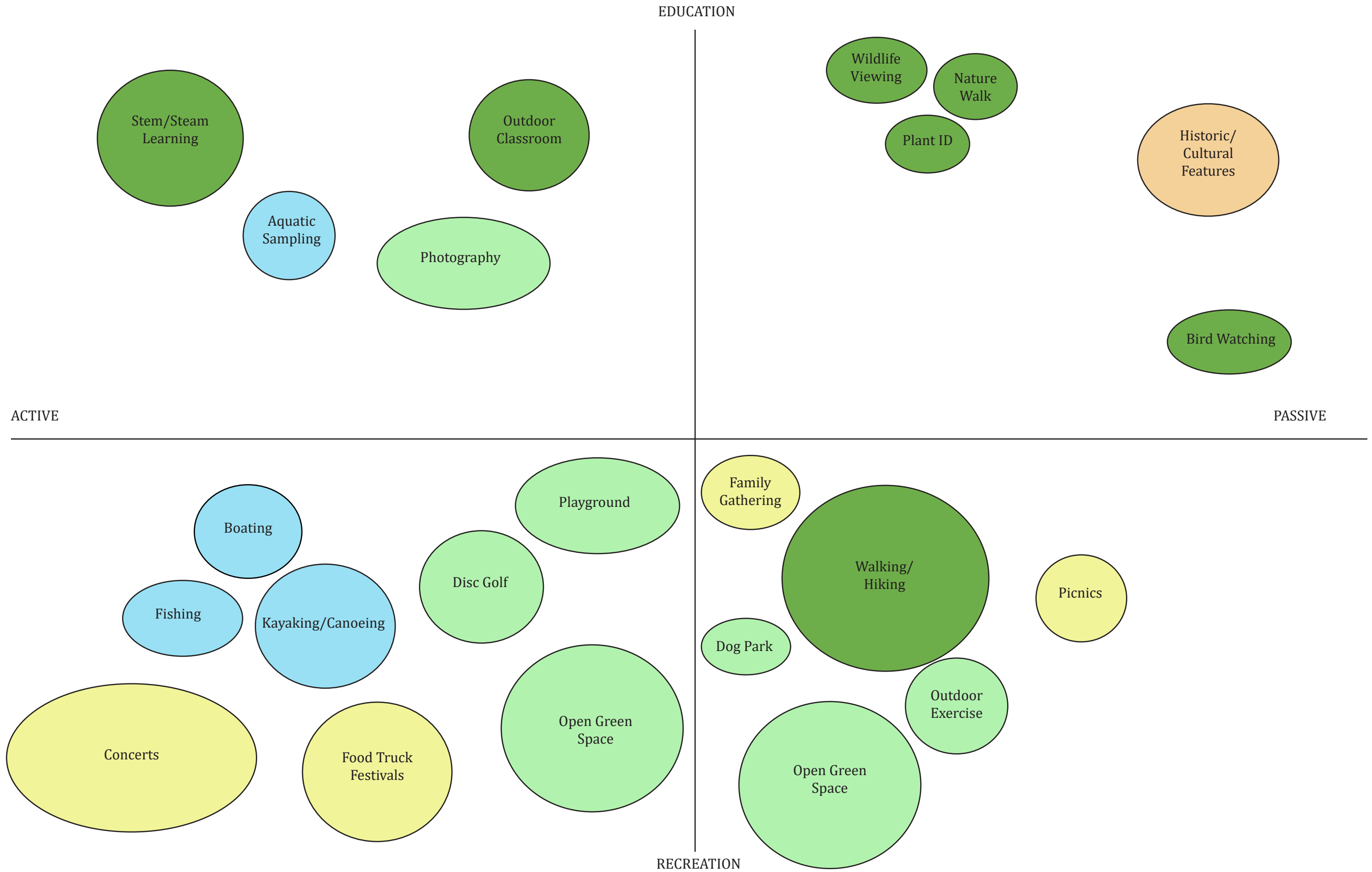
RESPONSES: 1798

NON-APPLICABLE

SURVEY RESULTS



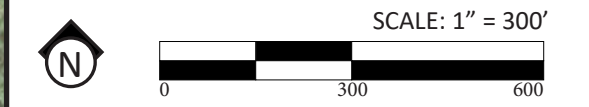
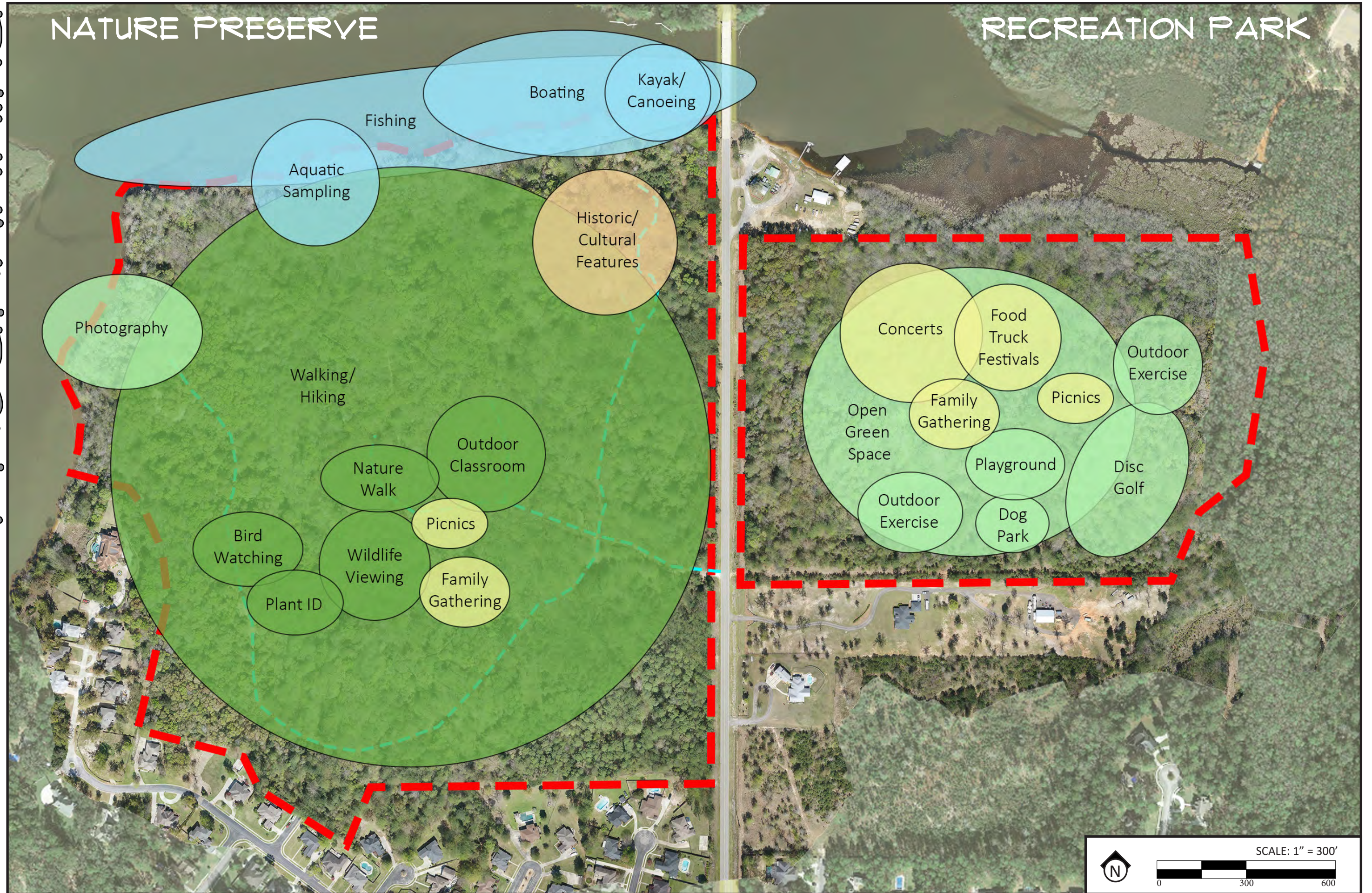
RELATIONSHIPS DIAGRAM



PROGRAMMING

NATURE PRESERVE

RECREATION PARK



SITE VISITS & INSPECTIONS



Apr 12 @ 9:41 AM

Baldwin County Hiking

How did it go? [Add Note](#)

2.02 mi
Distance

1:38:52
Total Time

29:11 /mi
Avg Pace

223 ft
Total Ascent

151
Total Calories



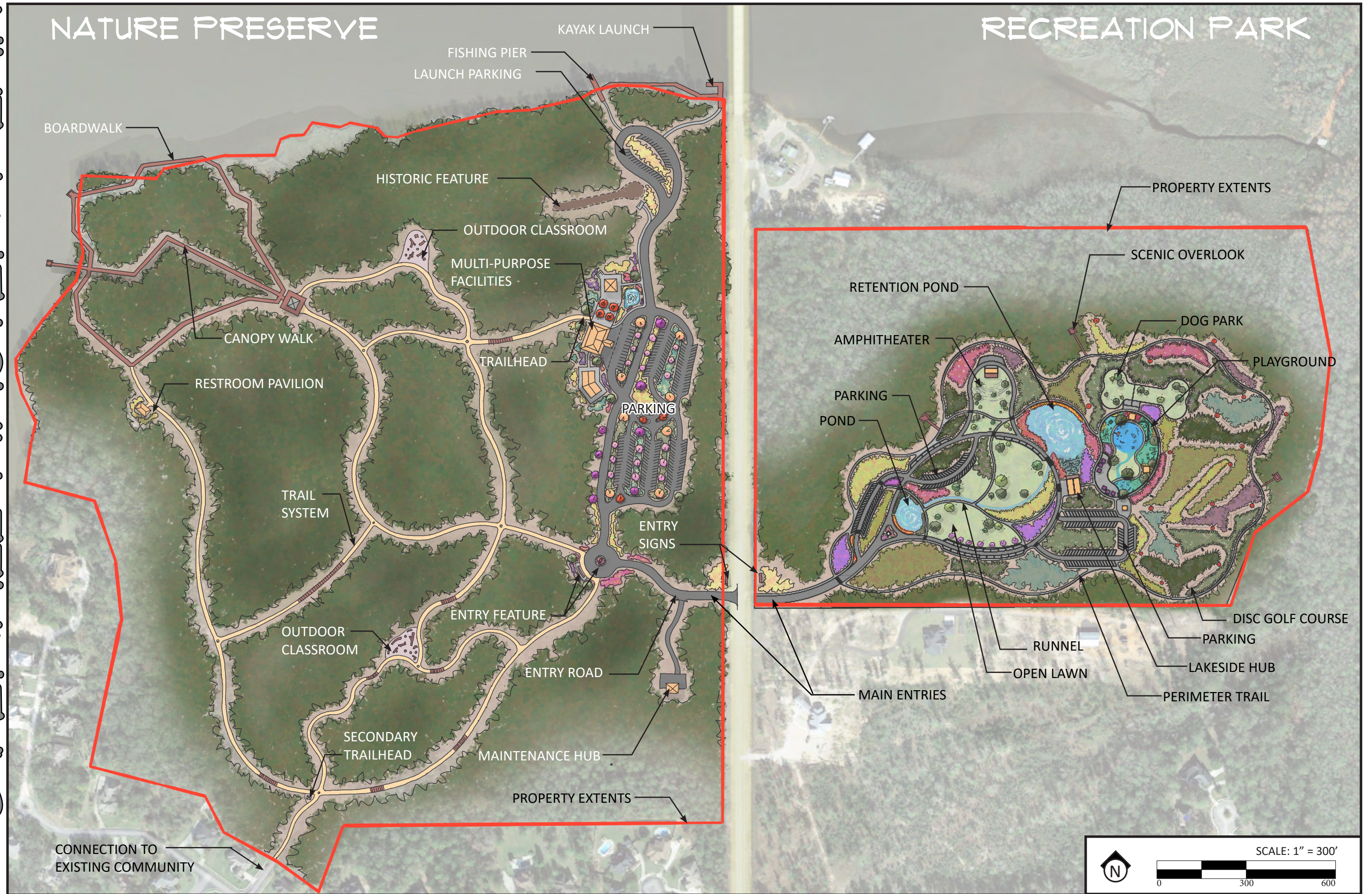
SITE IMAGERY



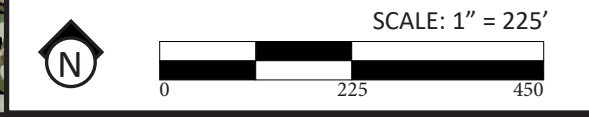
PRECEDENT IMAGERY



OVERALL MASTER PLAN



NATURE PRESERVE



EXPERIENCES



RECREATION PARK

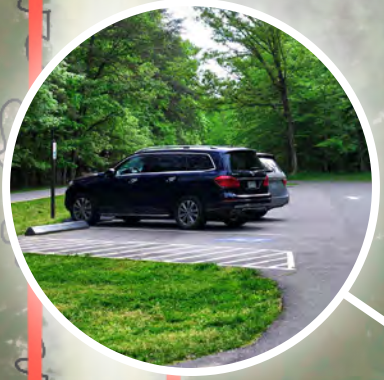


N

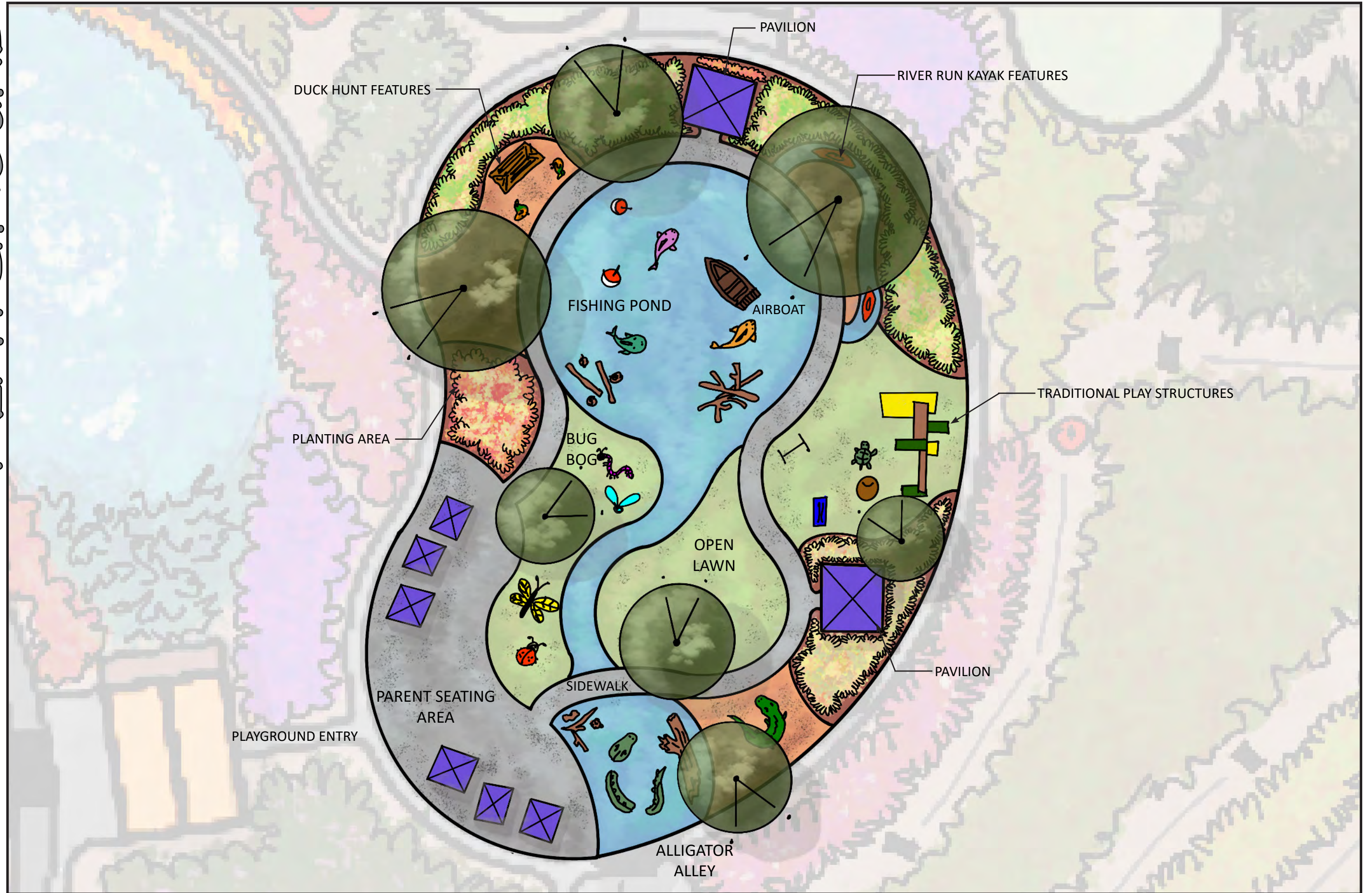
SCALE: 1" = 150'

0 150 300

EXPERIENCES



PLAYGROUND



PHASE I MASTER PLAN

NATURE PRESERVE

Included in Phase 1



RECREATION PARK



FUTURE PHASE

GOMESA



PASSIVE SITE FURNISHINGS



BENCH - HALF LOG RUSTIC STYLE



BENCH - CONCRETE, STREETSCAPES



BENCH - WOOD, TRADITIONAL STYLE



TABLE - CUSTOM CRAFTED WOOD



TABLE - CUSTOM CRAFTED CONCRETE



TABLE - WOOD, TRADITIONAL STYLE



TRASH RECEPTACLE - WOOD



TRASH RECEPTACLE - CONCRETE



TRASH RECEPTACLE - METAL, TRADITIONAL STYLE

ACTIVE SITE FURNISHINGS



BENCH - WOOD/METAL, DUMOR, #500



BENCH - WOOD/METAL, LANDSCAPE FORMS, MELVILLE



BENCH - METAL, VICTOR STANLEY, CR-96



TABLE - WOOD/METAL, DUMOR, #299



TABLE - METAL, LANDSCAPE FORMS, CHARLIE



TABLE - WOOD/METAL, VICTOR STANLEY, C-9



TRASH RECEPTACLE - WOOD/METAL, DUMOR, #502



TRASH RECEPTACLE - METAL, LANDSCAPE FORMS, POE



TRASH RECEPTACLE - METAL, VICTOR STANLEY, PSO--32

SITE FURNISHINGS



WATER FOUNTAIN - TRIPLE OUTPUT, ELKAY



BOTTLE FILLING STATION AND FOUNTAIN - ELKAY



BOTTLE FILLING STATION AND FOUNTAIN - AQUADONA



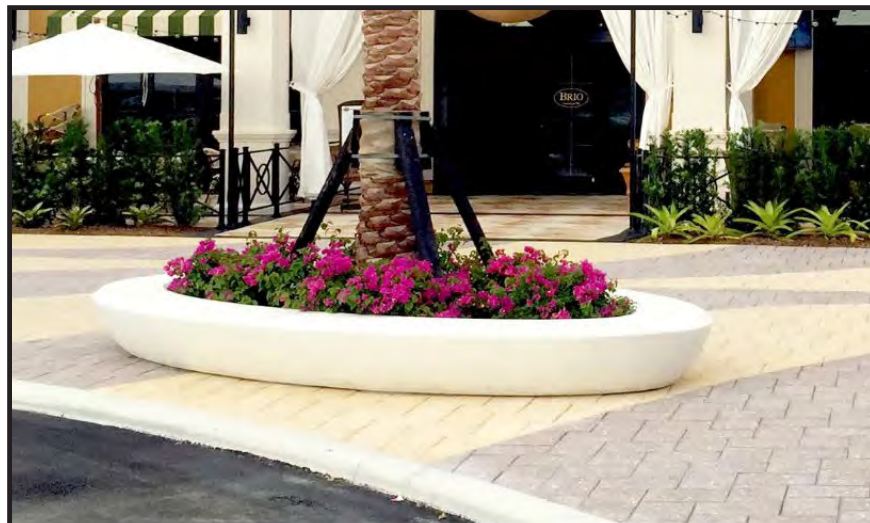
OUTDOOR CLASSROOM NATURAL FURNITURE



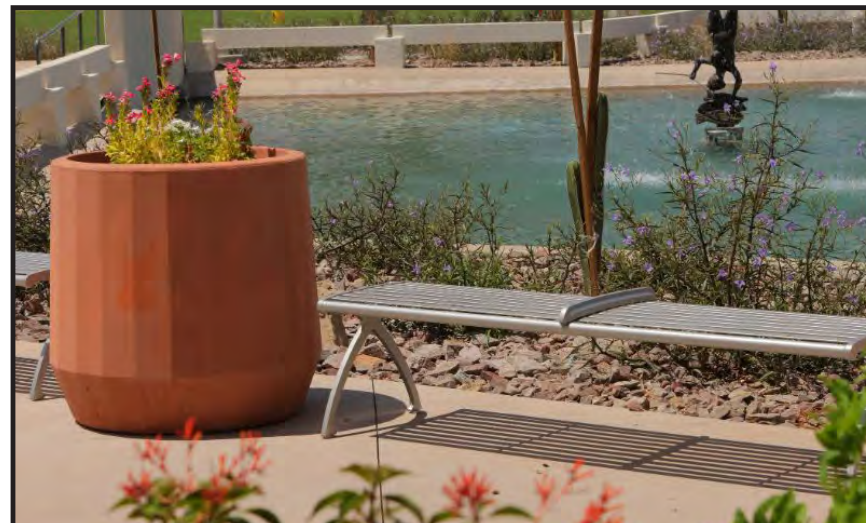
OUTDOOR CLASSROOM NATURAL FURNITURE



OUTDOOR CLASSROOM NATURAL FURNITURE



PLANTER - LANDSCAPE FORMS, NIU OVAL



PLANTER - LANDSCAPE FORMS, CIRQUE



PLANTER - DUMOR, 440

PLAYGROUND



CLIMBING NET - KOMPAN, ROBINIA



3-D RUBBER SURFACE DESIGN - MARATHON SURFACES



CROCODILE CLIMBER - GAMETIME



INSECT CLIMBERS - MONSTRUM



TREE STUMP PLAY STRUCTURE - GAMETIME



WOOD PLAY STRUCTURES - DUNCAN & GROVE



DUCK CLIMBER - SIK-HOLZ



BIRD'S NEST CLIMBING STRUCTURE - COLUMBIA CASCADE CO



BOAT PLAY STRUCTURE - GAMETIME

NEXT STEPS

- ✓ DEVELOP FINAL MASTER PLAN
- ✓ PRESENT MASTER PLAN TO CITY COUNCIL
- CREATE SUPPORTING DOCUMENTS
- ASSIST CITY WITH SEEKING ADDITIONAL FUNDING OPPORTUNITIES
- CITY TO ISSUE RFP FOR FUTURE DESIGN DEVELOPMENT PHASES

